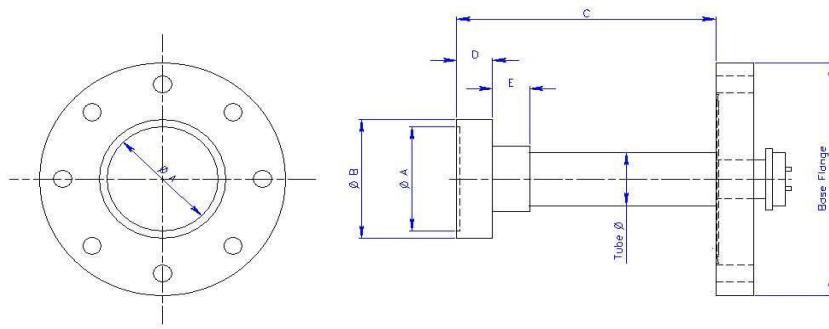


Ceramisis

Ceramic Topped In Vacuum Heating Elements with NiCr Filament

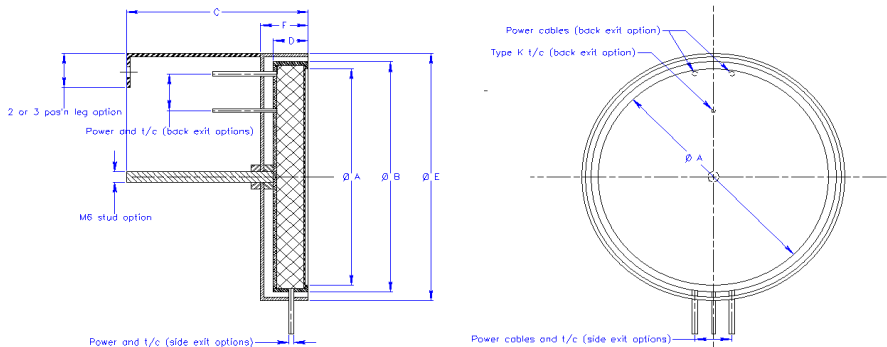
Base flange mounted with central power & type K t/c vacuum feedthrough, on tubular support.



Ø A - Hot zone	Ø B - Heater od	C - Length	Base flange	Tube Ø	D - Heater thickness	E - Collar thickness	Voltage Max	Current Max	Temperature Max
51mm (2")	58mm	custom fit	custom fit	1" o.d.	16.5mm	17mm	115 volts	4 amps	1000C
77mm (3")	84mm	custom fit	custom fit	1" o.d.	16.5mm	17mm	115 volts	6 amps	1000C
102mm (4")	110mm	custom fit	custom fit	1" o.d.	22mm	17mm	115 volts	13 amps	1000C
127mm (5")	133mm	custom fit	custom fit	1" o.d.	22mm	17mm	115 volts	14.5 amps	1000C
153mm (6")	158mm	custom fit	custom fit	1" o.d.	22mm	17mm	115 volts	14.5 amps	1000C
178mm (7")	185mm	custom fit	custom fit	1" o.d.	22mm	17mm	115 volts	14.5 amps	1000C
229mm (9")	240mm	custom fit	custom fit	1" o.d.	22mm	17mm	240 volts	17 amps	1000C

Element can be mounted in any orientation
 Element head is detachable for in chamber mounting through small ports.
 Rotation option available to enable element to rotate in vacuum
 Custom sizes available on request
 Elements are not guaranteed unless used with matched Ceramisis power supply
 Can be used as direct replacement for halogen lamp heaters

Element only mounted on M6 studding or 3 legs, with in vacuum power leads and ceramic beaded type K thermocouple.

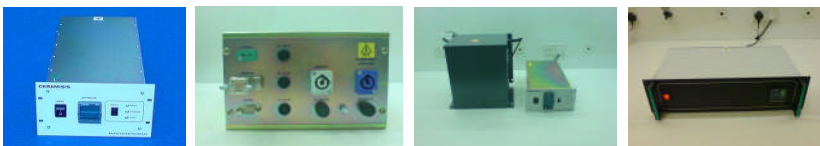


Ø A - Hot zone	Ø B - Heater od	C - Length	D - Heater thickness	Ø E - Heatshield od	F - Shield thickness	Mounting stud or legs	Voltage Max	Current Max	Temperature Max
53mm (2")	58mm	custom fit	16.5mm	63mm	22.5mm	M6 Stud only	115 volts	4 amps	1000C
78mm (3")	83mm	custom fit	16.5mm	93mm	22.5mm	M6 Stud only	115 volts	6 amps	1000C
106mm (4")	111mm	custom fit	22mm	121mm	28mm	Both	115 volts	13 amps	1000C
129mm (5")	134mm	custom fit	22mm	144mm	28mm	Both	115 volts	14.5 amps	1000C
154mm (6")	159mm	custom fit	22mm	169mm	28mm	Both	115 volts	14.5 amps	1000C
178mm (7")	183mm	custom fit	22mm	193mm	28mm	Both	115 volts	14.5 amps	1000C
236mm (9")	241mm	custom fit	22mm	251mm	28mm	Both	240 volts	17 amps	1000C

Element can be mounted in any orientation
 Custom sizes available on request
 Elements are not guaranteed unless used with matched Ceramisis power supply
 Can be used as direct replacement for halogen lamp heaters
 Custom made in vacuum cables, connectors and feedthroughs available

Ceramisis sample heater controller - SHC1000B & SHC1500B

Ceramisis's SHC sample heater controllers are designed specifically to power and control our range of NiCr filament ceramic topped heating elements. At the heart of it is a Eurotherm 2216e PID temperature controller, which enables the heater to be held at exactly the set temperature. A tuning facility enables the controller to accurately tune the heaters environment and avoid overshooting during temperature ramping. Temperature ramping and cooling between two set points at a set ramp rate is also possible. Remote operation with Modbus RS232, RS485 and other protocols is also available. Units come with 24v safety interlock circuit, 240v x 13 amp input (115v input also available), output is either 50v, 115v or 240v. The 1kw unit is available in 3U x 19" rack mount, or 4U half rack mount with integrated transformer. Our 1.5kw unit is available in 4U half rack mount only. Above 1.5kw a separate transformer box is required.



Updated 07/10/08